

Google my business adds service area features for **MOBILE BUSINESS**

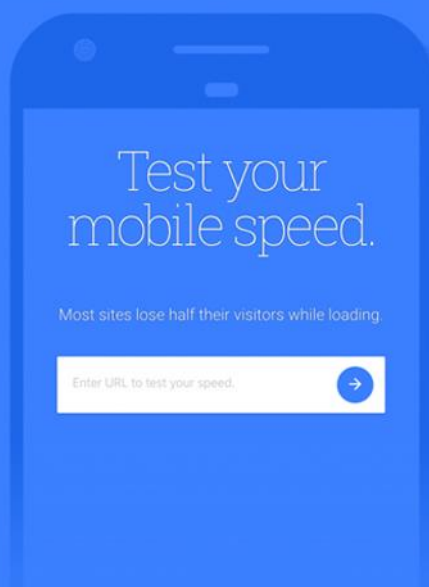


You can now reply to reviews on your **GOOGLE MAP LISTING**

Google finally adds structured data product markup reporting to

THE NEW SEARCH CONSOLE

Google has revamped it's
"TEST MY SITE"
mobile speed tool



Important

PAY PER CLICK
updates for **MARCH 2019**





CUSTOMER FINDER®
MARKETING

(239) 331-7055 | [Email Us](#)



March 2019 NEWSLETTER

1

GOOGLE MY BUSINESS ADDS SERVICE AREA FEATURES FOR MOBILE BUSINESS

2

YOU CAN NOW REPLY TO REVIEWS ON YOUR GOOGLE MAP LISTING

3

GOOGLE FINALLY ADDS STRUCTURED DATA PRODUCT MARKUP REPORTING TO THE NEW SEARCH CONSOLE

4

GOOGLE HAS REVAMPED IT'S "TEST MY SITE" MOBILE SPEED TOOL

5

GOOGLE IS FINALLY GOING TO PULL THE PLUG ON GOOGLE+

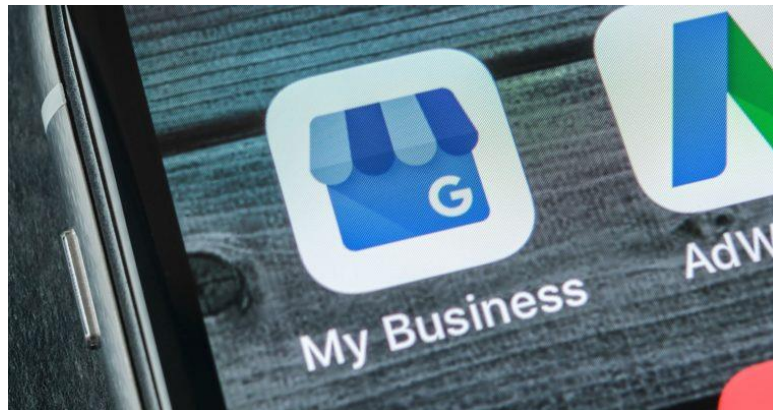
6

IMPORTANT PAY PER CLICK UPDATES FOR MARCH 2019

March 2019 NEWSLETTER

1

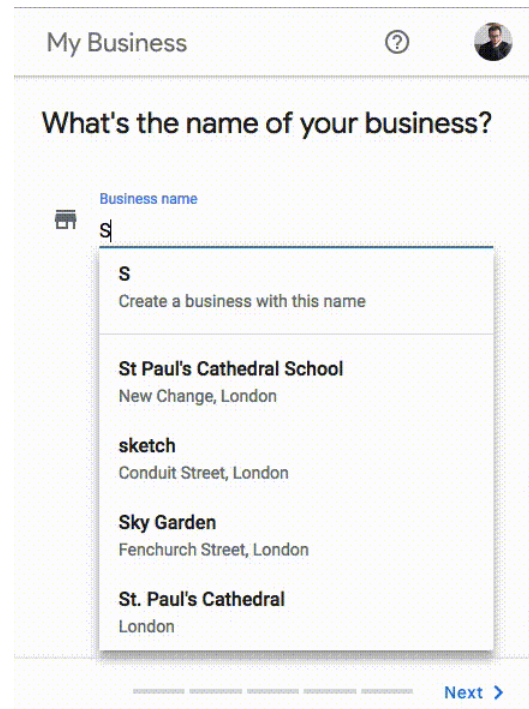
GOOGLE MY BUSINESS ADDS SERVICE AREA FEATURES FOR MOBILE BUSINESS



If you or any of your clients has a mobile business, like plumbing service, landscapers or any business that is always on the move - we have good news for you.

Google wants to help those who service multiple areas by showing their service area & business information on Google Search and Maps. You can enter the area you are generally in by submitting the list of zip codes on GMB.

It simply **starts** with "Do you want to add a location customers can visit, like a store or office?" while creating your GMB account. It will then show you options that are tailored to fit the needs of a mobile business. But in case you already have an account on GMB, you can edit it from the dashboard.



My Business

What's the name of your business?

Business name

S

S
Create a business with this name

St Paul's Cathedral School
New Change, London

sketch
Conduit Street, London

Sky Garden
Fenchurch Street, London

St. Paul's Cathedral
London

Next >



(239) 331-7055 | [Email Us](#)



March 2019 NEWSLETTER

The best part about this feature is - **it allows the business owners to separately edit the storefront and service area.** So, in case you have a physical location and also provide mobile services, you can highlight both on the SERP and Map.

Just in case your address isn't applicable to your business, you can simply clear it. But will there be any downside to it? These points might be able to answer your question.

1. Clearing your address will turn your listing into a service area business which will remove the directions icon, remove the maps pin, remove the listing from the Google Maps API and hide your address from the public.
2. If you're a service area business and your address was automatically cleared by Google, don't try to add it back. If you attempt to do so, you'll be required to reverify it.
3. In spite of your "missing" address, Google still knows where you are but they hide your address from the public.
4. The old service area radius is replaced with a list of zip codes or cities.
5. Rankings are still based on your address (whether you like it or not).
6. If you move, you should add your new address back, reverify it, then clear it. Otherwise, your ranking will be based on the old address.

Our takeaway

If you or your client's business can benefit from the service area feature, make sure you read Google's [announcement](#) & then head to this [article](#) for further explanation.

March 2019 NEWSLETTER

2

YOU CAN NOW REPLY TO REVIEWS ON YOUR GOOGLE MAP LISTING



Again a piece of good news for business owners and agencies from Google. Google is now allowing business owners or those who operate it digitally to respond to reviews directly from the desktop.

Until now, you had to open the Google My Business Mobile app to do so - which was troubling for some as many found the GMB app confusing. This new feature (which should be there from the very start) will provide convenience to agencies who have multiple listings to manage.

According to Community Manager, Kara at GMB...

"We're making improvements on how you can reply to reviews, and providing you with more information and tools to get feedback from customers. You can now reply to reviews directly with your business profile on Google Maps from your computer."

Replying directly from Google Maps lets you manage your reviews without having to download the Google My Business app or open its homepage".

How to go about it

Just search for your verified business on [Google Maps](#). When you see your listing scroll down until you see Reviews, then click Reply next to the review you'd like to reply to.

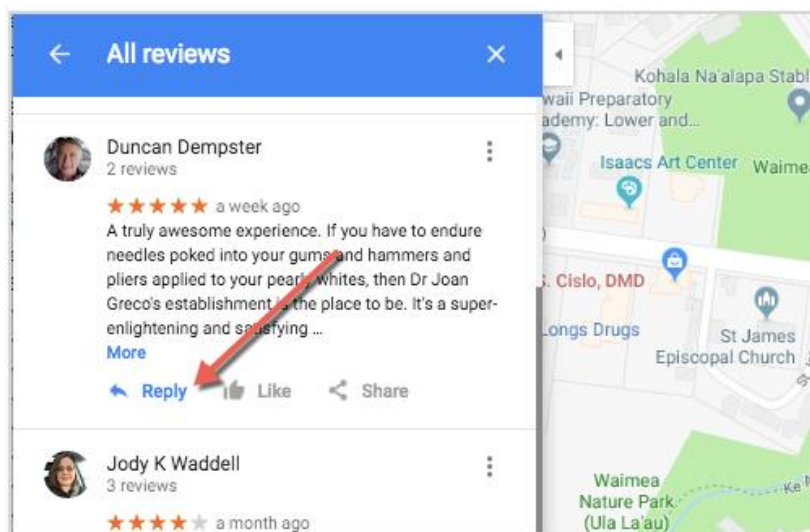
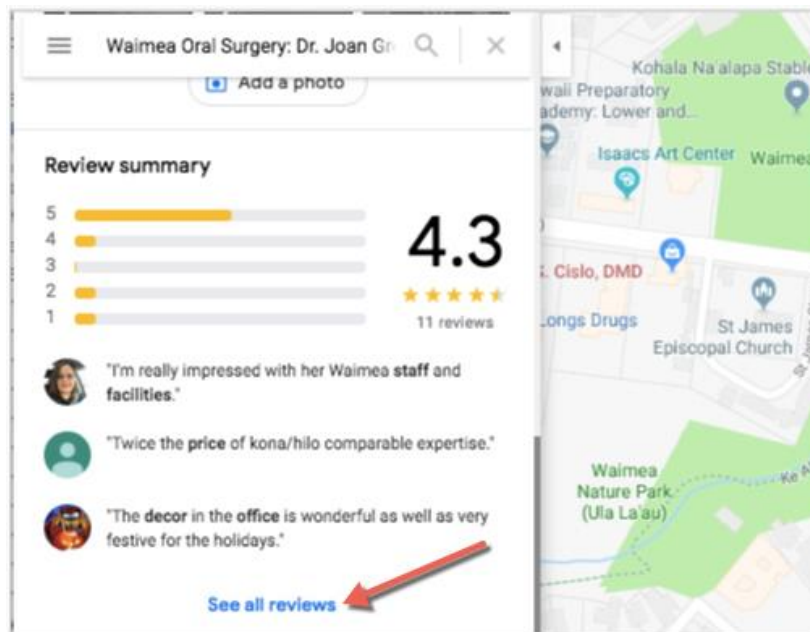


CUSTOMER FINDER[®]
MARKETING

(239) 331-7055 | [Email Us](#)



March 2019 NEWSLETTER



Our takeaway

We all know the importance of reviews and how it plays a crucial role. By allowing us to directly respond to them, Google provided the much-needed convenience. In case you haven't seen it already, Google has released its [guidelines](#) on how to respond to reviews, especially the negative ones.

3

GOOGLE FINALLY ADDS STRUCTURED DATA PRODUCT MARKUP REPORTING TO THE NEW SEARCH CONSOLE



Google Search Console has finally **added** Structured Data Product Markup reporting on 22nd of Feb, 2019. Not just that but they also start sending out emails notifying about your active product markup errors. The product markup reporting now includes:

- Recipe
- Job Posting
- Event
- Q&A Page
- Product

Despite being one of the most important Schema markups, Google still hasn't finished the reporting yet and are still working on some bugs.



Processing data, please check again in a few days

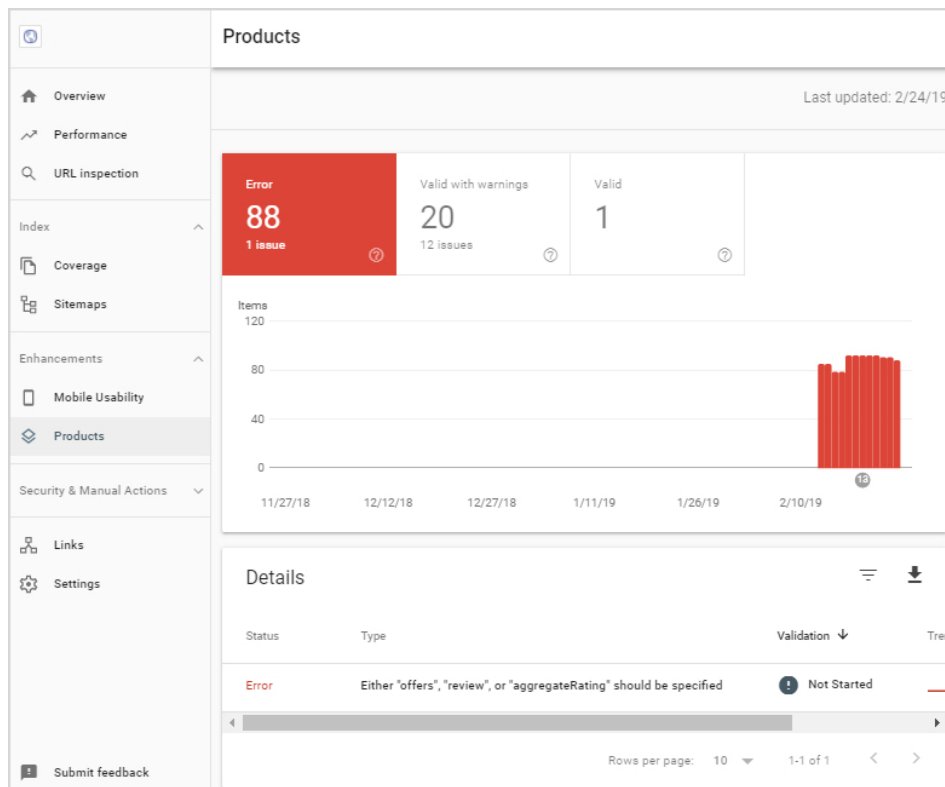
March 2019 NEWSLETTER

Be informed that not all websites have access to this new reporting, so if you haven't found one in your search console, chances are you will soon be able to see it.

When we tested some WooCommerce website, the search console showed some errors like:

Either "offers", "review", or "aggregateRating" should be specified.

But when we tested the same URL on Google's [Structured Data Testing Tool](#), it did not display any errors, it just showed warnings instead.



Our takeaway

As you can see, the number of errors and warnings on the new Structured Data Product Markup reporting is staggering. But be careful of all the errors and warning emails that you might be receiving as they can be actual errors and not a bug.

But you don't have to worry about something that you can't control like not having a review to add since Google is still working on the New Search Console and will likely fix the bugs very shortly. So if you see any errors and can't find any solution to it, wait for it. Google will fix it out and we will notify you as soon as they do.

March 2019 NEWSLETTER

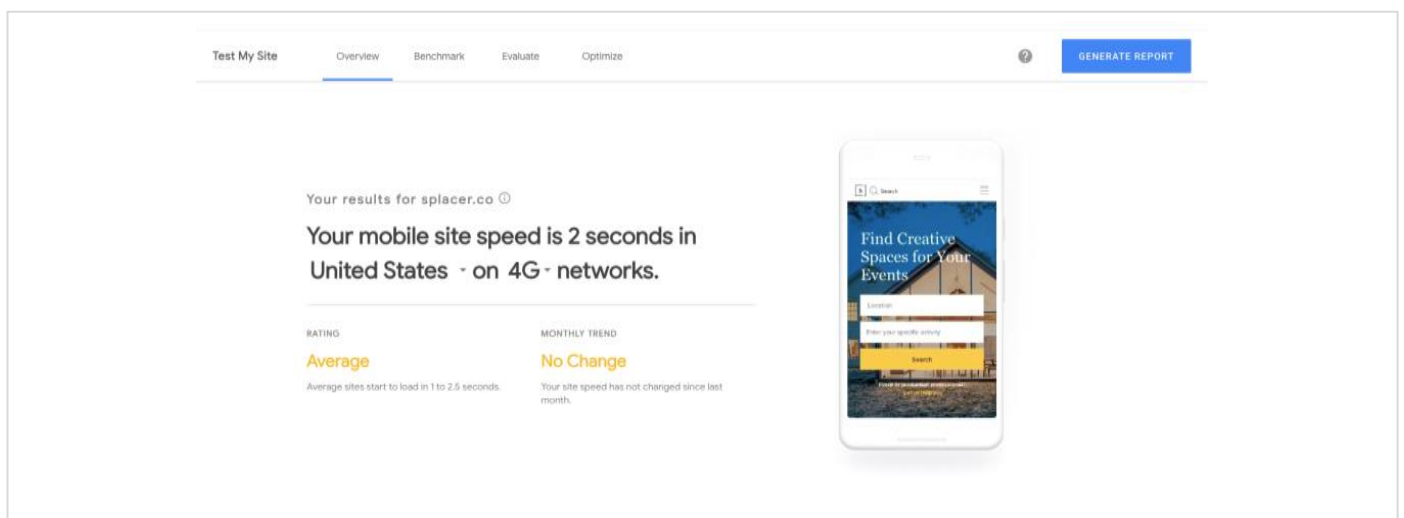
4

GOOGLE HAS REVAMPED IT'S "TEST MY SITE" MOBILE SPEED TOOL



Google has recently revamped their [Test My Site Tool](#) that shows the average loading speed of your website on mobile devices along with a report on how to fix issues and make your website better.

The biggest change here is they are now using a 4G connection to test the site speed instead of a 3G connection that they used earlier. They have also added some new features, which according to Google, will help website owners boost their site's performance.





(239) 331-7055 | [Email Us](#)



March 2019 NEWSLETTER

Here are the new features that have been added to the tool:

- The speed of both their entire site and of individual pages
- Whether their site/page speed is faster or slower compared to the prior month
- Whether their site speed/page speed ranks Fast, Average, or Slow
- How their site speed compares to others in the industry
- The potential impact of site speed on revenue
- A detailed list of recommended fixes to increase speed on up to 5 pages on their site
- A complete report to share with their team

Our takeaway

When it comes to the digital world, every second counts. Multiple types of research have confirmed that site speed directly affects the bottom line of your business. Hence, you want your website to load fast. Now that Google has revamped its tool and provides more meaningful insights, it's easier than ever to understand the issue (if any) and fix it immediately.

If you need any help, our experienced team will be there to assist you. Just connect with our support team with details.

5

GOOGLE IS FINALLY GOING TO PULL THE PLUG ON GOOGLE+

Google has finally decided to shut down Google+. Although they announced it last October, the last nail in the coffin will be put on the 2nd of April. Here's the full [FAQ](#) in which Google provides details and updates regarding the shutdown.

They have already stopped allowing people from creating new profiles from February and now it will be shut down for "Most" of the people. By most of the people, we mean those who don't use the G-suite. Google is still somehow trying to milk Google+ (can't blame them though) and add it to the G-Suite. According to Google, it will be like a private & secure social network where the team can share ideas, projects, and updates in real time.

Be informed that your photos & videos on Google Photos will not be deleted.

And if you want to download the data from your Google+ account before Google shuts it down completely, [click here](#). Take note that downloading your data doesn't delete it, so here's where Google provides [Instructions](#) for deleting your data.

Our takeaway

- Make sure you download all your important data from Google + account, including data on album archives and pages.
- Delete the Google+ Icon from your website
- De-activate any auto-post settings for Google+ in your WordPress plugins.
- Remove any schema markup that is linked to your Google+ identities.

March 2019 NEWSLETTER

6

IMPORTANT PAY PER CLICK UPDATES FOR MARCH 2019



- Google ads will stop supporting any **longer position metrics** from September.
- You can now add **more text in call only Google Ads**.
- Google has added video assets, detailed performance reports and strength scorecard in **Responsive display ads**.
- You can now view **predefined reports** directly on the section you are navigating.
- **Expanded Text Ads are still beating Responsive search Ads with huge a margin**.
- Is Google Ads Customer Match Feature Basically **Dead**?
- Give this **article** a read if you can't decide between Daily Vs Lifetime budget on Facebook Ads.
- Deciding the right Call to action is crucial to the success of your PPC campaigns. Here's how you can craft compelling **CTA**.
- Facebook has achieved a milestone which till now only belonged to Google. **Reaching 2 million active advertisers**. However, Google is far ahead in the game right now.
- Are your YouTube Ads not performing well? This **article** might help you.
- Google Ads shopping campaigns continue to **expand**.
- Bing Ads have launched Google like **language targeting** at the campaign level.
- Google Ads bringing click share to **Search campaign competitive metrics**
- New to Pinterest Ads? Here's a simple **guide**.
- **Manufacturer center initiatives** are a promising start for 2019 Google updates
- Here's **how** you can efficiently utilize the broad match keywords.
- **Quora rolled out auction insights and search targeting option**.